

Description per item in the KSMDData Quote.

- 30 KSMDData Introduction.....1
 - In DB deliveries the Data functions below are enclosed1
 - In KSMLDB deliveries the Article functions are also enclosed in KSMDData.....2
- 31 Dataviewer option, search and print KSM protocol.....4
 - Search and edit data4
 - Trend curves.....4
- 32 Export data per info option5
- 33 Export all data to template files, option5
- 34 Export to true xls files using KSMEdit.....6
 - KSMEdit xls template files6

30 KSMDData Introduction.

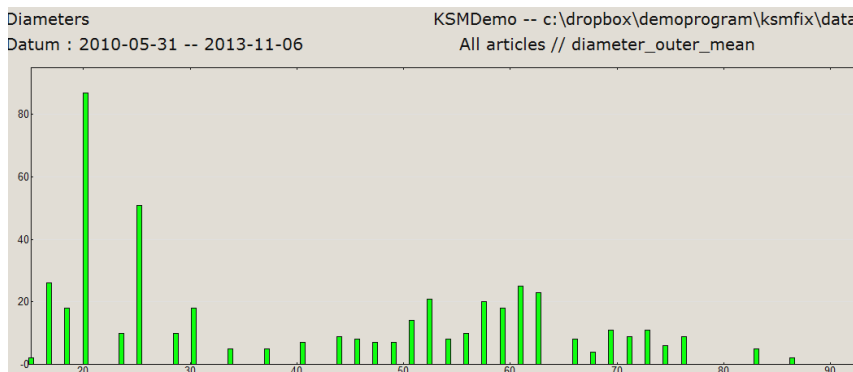
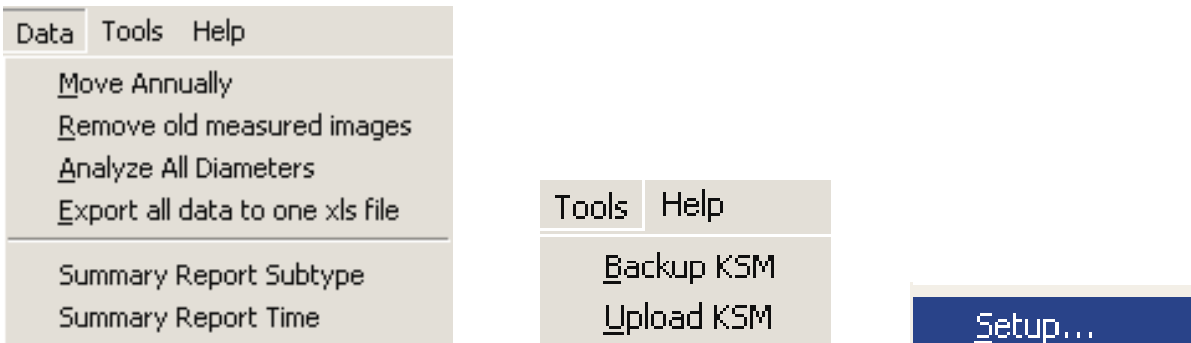
KSMDData is from version 3.0 delivered if DB and LDB option is used.

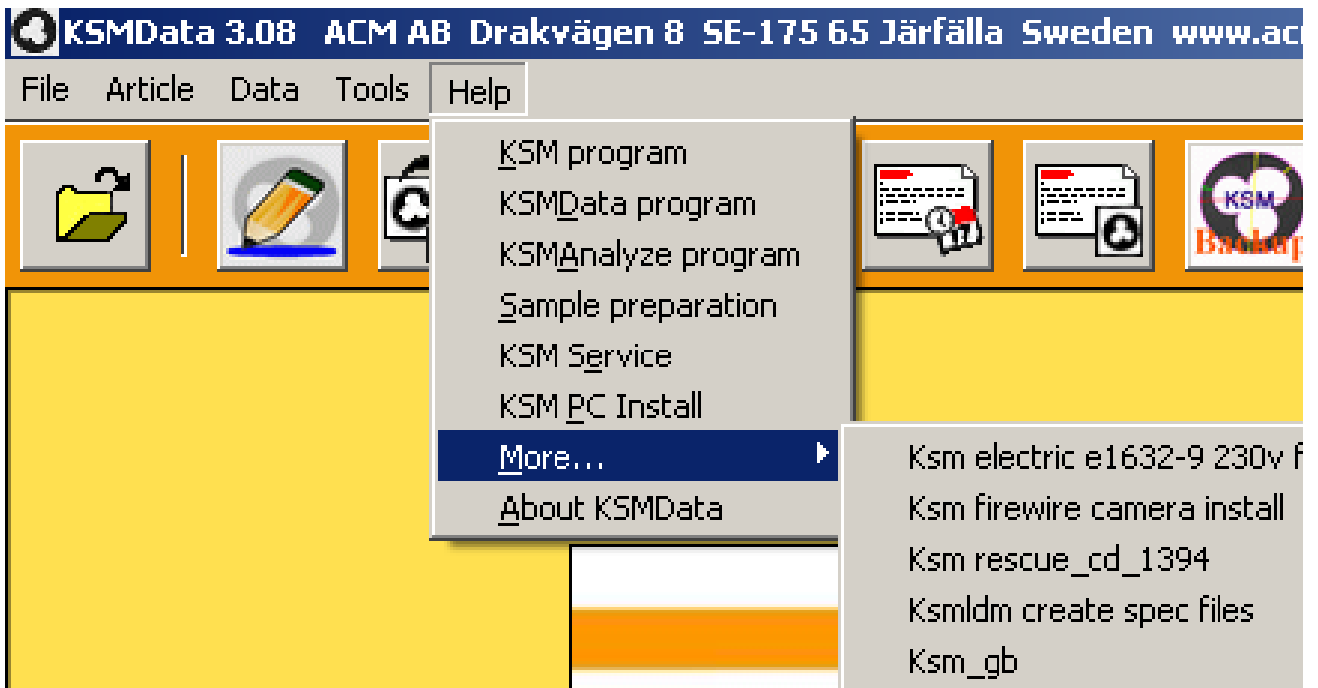
A new module for easy and efficient handling of data and specs (if KSMLDB is used) at the office.



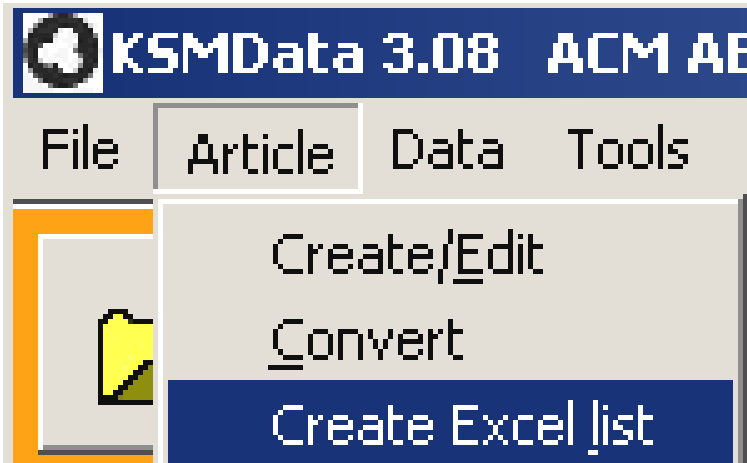
Many functions are equal in KSM and KSMDData such as handle data and editing articles (specifications if KSMLDB is used). KSMDData can be used on the office Windows PC.

In DB deliveries the Data functions below are enclosed



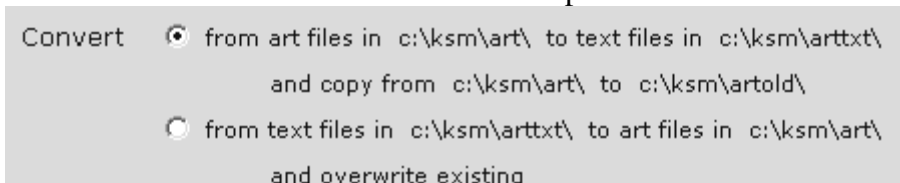


In KSMLDB deliveries the Article functions are also enclosed in KSMDData

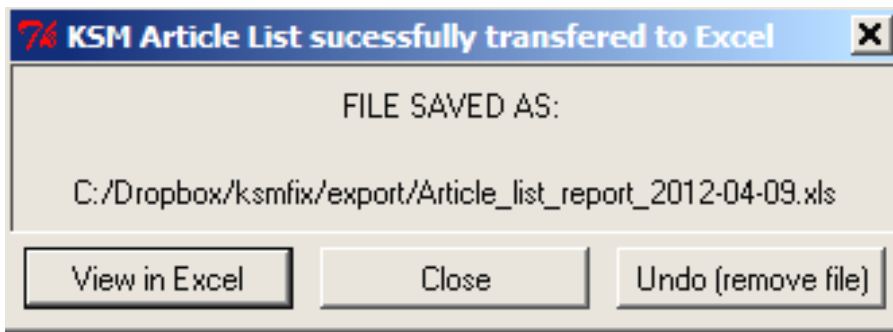


Edit the specifications (art files) in the same manner as in KSM.

In addition also Convert to xls files per KSM measuring program codes then to edit/copy/paste in Excel and Convert back to the KSM ASCII specification files.



Create an xls list of all specifications including some major contents.



The excel file is located and named automatically and if Excel is installed on the PC KSMDData can open the same

	A	B	C	D	E	F	G	H	I
1	KSM Article List								
2									
3	Article	Cable Type	Program Code	Measuring Program	Spec.-Min.W.	Spec.-Ave.W.	Material	Nominal Area	Nominal Weight
4									
5	ACM141OHM	RG Red Ohm	OHM	resistance			Cu		
6	ACM141RG	RG	RG	round_global	1.415	1.538	PVC2	74.3	25
7	ACM141RG	RG	RG	round_global	1.415	1.538	PVC2	74.3	25
8	ACM141RG	RG	RG	round_global	1.415	1.538	PVC2	74.3	
9	ACM141RG	RG	RG	round_global	1.415		PVC2	77.5	
10	ACM141RG	RG	RG	round_global	1.415	1.538	PVC2	74.3	25
11	ACM141RGW	RG	RG	round_global	1.417	1.542	PVC2	74.3	
12	ACM142RG	RG	RG	round_global	1.4	1.545	PVC2		
13	ACM145RG	RG	RG	round_global	1.415	1.538	PVC2	74.3	25

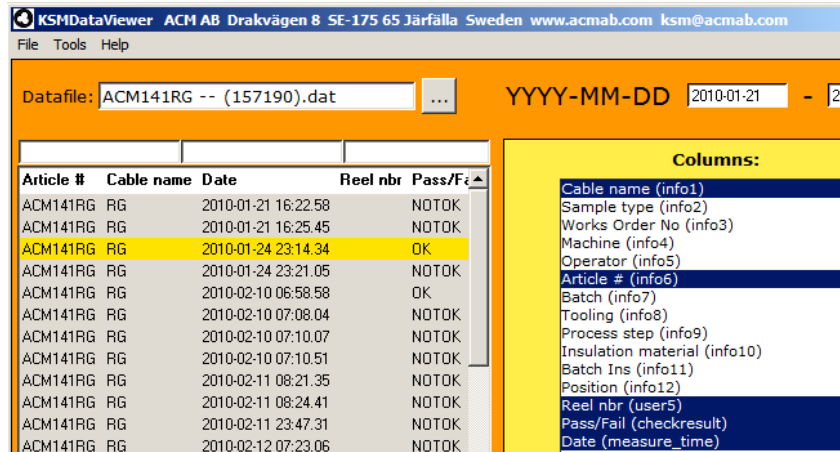
Options for KSMData

31 Dataviewer option, search and print KSM protocol

including measured data and the measured image. The same as after measuring in KSM.

Eliminates the use of paper printed KSM protocol. Browser function for old data in other locations.

Search for NOTOK and other values



Search and edit data

Filter and search functions to locate a certain measuring point and remake the KSM protocol as well as open all data in the measuring point. Later achieved measuring data be added, for example Hot Set.

2010-01-24 23:14				
Cable Type	RG	Batch		
Works Order No		Position	Start	
Machine	EXT 01	Subtype		
Operator	Stefan	Length	1000	
Article #	ACM141RG	Reel nbr		

RG Roundable global	Measured	Deviation	Min	Max	Nom
Wall min	1.45 mm		1.415		
Wall ave	1.56 mm		1.538	1.71	
Wall max	1.73 mm				
Concentricity	0.29 %	X		0.22	
Wall extra P					
Inn.D ave	13.67 mm			13.8	
Out.D min	16.85 mm		16.2		
Out.D ave	16.88 mm				
Out.D max	16.90 mm		18.5		
Quality	0.05		0.12		
Colour	0 %	X	30		
Resistance	20.87		19.5	21.2	
Meas wt	31.23				
Strip force	21.56				
Area Hole	146.63 mm²			74.3	
Area Wall	76.96 mm²				
Area Overdim	0.92 mm²				
Area Overdim P	1.7 %				

2010-01-24 23:21:05			
Article # (info-6)	ACM141RG	Hotset (user-6)	
Batch (info-7)		Length (user-4)	1000
Batch Ins (info-11)		Meas.wt (user-3)	32.89
Cable Type (info-1)	RG	Reel nbr (user-5)	
Insulation material (info-10)		Resistance (user-2)	20.99
Machine (info-4)	EXT 03	Resistance2 (user-8)	
Operator (info-5)	Stefan	Strip force (user-7)	21.39
Position (info-12)	Start	Subtype (user-1)	
Process step (info-9)			
Sample type (info-2)			
Tooling (info-8)			
Works Order No (info-3)			

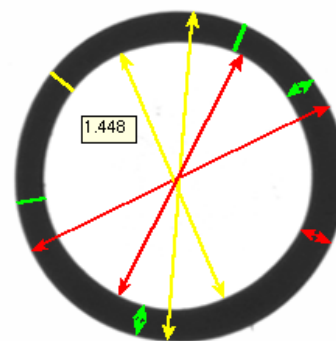
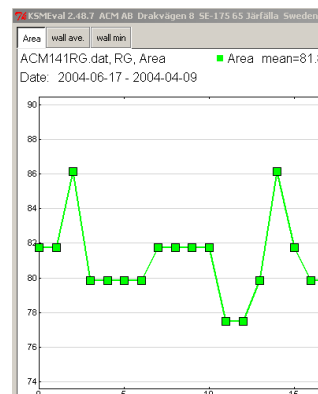
Print the protocols for example with a PDF printer.



Trend curves

If KSM Trend is used in KSM the same trend curves can be displayed via KSMData Summary or via the Dataviewer.

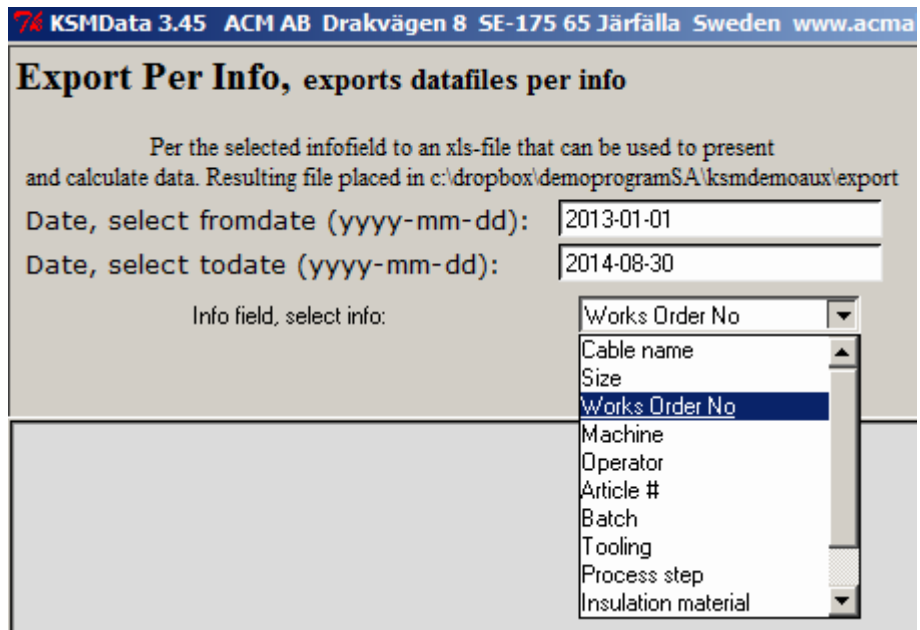
Display measured data as well as the measured image.



32 Export data per info option

Time period is selectable.

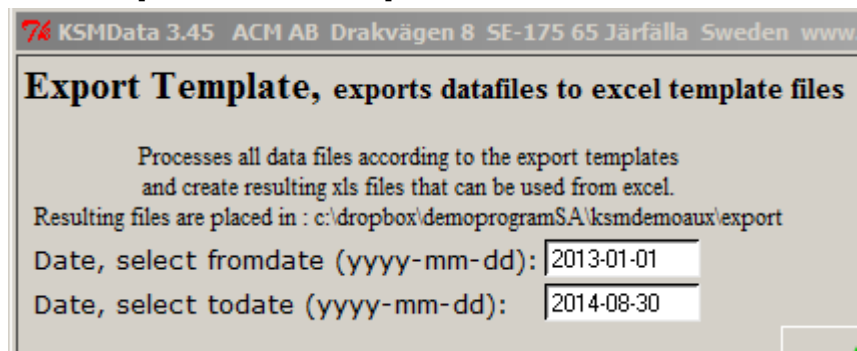
All data from selected info field is exported to a tab separated file named xls.



33 Export all data to template files, option

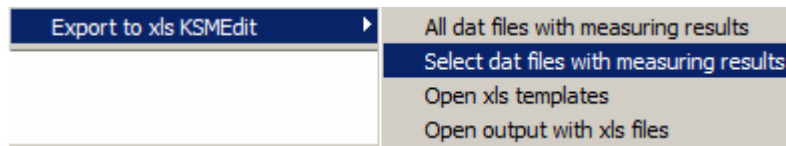
Time period is selectable.

Template with selection which of all KSM data fields that shall be exported to a tab separated file named xls.



34 Export to true xls files using KSMEdit

Either all measuring files
or selectable as per
templates



KSMEdit xls template files

In Microsoft Excel file \KSM\customer\KSMEdit_templates*.xls import commands are noted.
The xls files must be in Microsoft Excel 97 - 2003 & 5.0/95 format.

And the first page that contain the import command must be named "Template"

Import commands are (must be at the same line in xls page Template)

"ksm(fill):key". The "key" is the column header name in the KSM dat file

This command add all data, under the one header, from one dat file.

Examples including header manually noted;

measured	Colour	min	average	max	mm ²
>ksm(fill):measure_time	>ksm(fill):user1	>ksm(fill):wall_min	>ksm(fill):wall_mean	>ksm(fill):wall_max	>ksm(fill):area_wall

"ksm(single):key". The "key" is the first column header name in the KSM dat file

This command add only one data from the dat file. Examples below.

Cable type **>ksm(single):info1** Article **>ksm(single):info6**

Could for example be in a header as below;

A	B	C	D	E	F	G	H
ACM							
Cable type	>ksm(single):info1				Article	>ksm(single):info6	

Depending on the selection above, one, selected or all dat files are exported to the xls pages